

Rochdale Reimagined Workbook

Site 01 : The Railway Station



Rochdale Reimagined

Rochdale Reimagined is a project which looks at new ways to use historic buildings and spaces in Rochdale. Last year the project was completed by students of Manchester School of Architecture and this year it will be completed by students from three primary schools in Rochdale.

If you are reading this booklet then you are one of the school children who has been chosen to reimagine Rochdale and you will be working in a small group as your own “architectural practice” on one of five sites in the “Heritage Action Zone” in Rochdale. It is your job to dream up something amazing for these old buildings and vacant sites to make your town centre a vibrant place for everyone.

About Rochdale

Rochdale is a place that boomed during the industrial revolution, while the town was first mentioned almost 1000 years ago in the Domesday Book, it is a settlement shaped by the needs of manufacturing. Rochdale is on the border of both Lancashire and Yorkshire and that is reflected in the building materials, while red brick embellished with hard gritstone is mainly used around the town centre, you can equally see many buildings built using Yorkshire stone. It is situated in the valley of the River Roch which proved to be a great asset to manufacturing, with the slowly climbing Rochdale Canal following in 1804 and the railway in 1839.

The town is distinct; the structure of the landscape means that key buildings are clustered into the compact town centre, focussing upon the river. The magnificently Gothic Town Hall, the mediaeval parish church St Chads, the Riverside Offices, bus station and shopping centre are situated within the valley, while the skyline is dominated by a line of great tower blocks called the Seven Sisters.

Rochdale town centre has been undergoing impressive regeneration in recent years with the opening of the new council offices, new transport infrastructure including the Metrolink trams arriving in the town centre, while investment into public spaces including re-opening the river and historic bridges has brought new life to the town. A new market opened recently and more and more independent businesses choose Rochdale for their home base. The regeneration programme is continuing with the impressive Riverside Centre to be opened in 2020. Despite these significant changes there are parts of the town centre that have continued to decline or face challenges; these include Rochdale’s historic high street and one of the main gateways to the town centre, Drake Street.

What is a Heritage Action Zone?

The sites which you will be looking at are in an area that was awarded “Heritage Action Zone” status in 2017 by an organisation called Historic England. Heritage Action Zones are areas of historic interest which have been selected for a targeted regeneration project. Historic buildings which have deteriorated through decades of neglect will be restored and put back into use, and unsung places will be recognised and celebrated for their unique character and heritage, helping to instil a sense of local pride.



Site 05 : Bell Street

Site 04 : Fashion Corner + Waterside

Site 03 : Champness Hall

Site 02 : The Retail Park

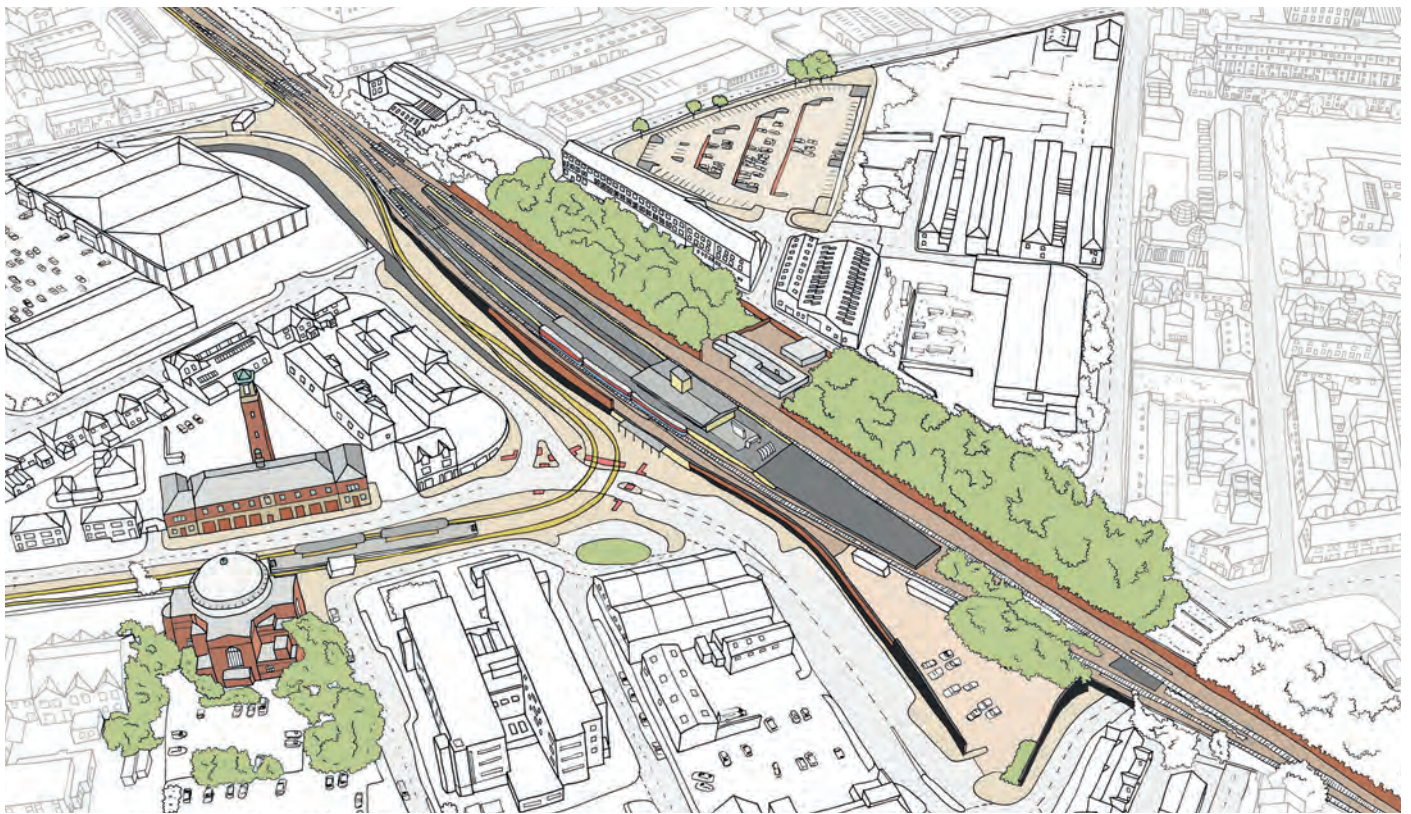
Site 01 : The Railway Station

The Railway Station

Rochdale Railway Station is one of the key gateways to the town centre, in recent years it has become distant and disconnected from the town centre. The current station building is from the 1980's, with a restored and reopened underpass. The station uses three tracks and connects Rochdale with Manchester and Leeds and Blackburn.

A number of improvements have taken place over the years and the council is working to put together a vision for a contemporary station building and an improved public space.

The challenge of this site is to give the station a new design and improve the public areas around it. This new area should link the station and the Fire Station museum and consider how to improve pedestrian and cycling connections to the town centre.



This drawing is a birds eye view which shows the station and its surroundings from the sky.



This drawing is a collage showing the journey from the Railway Station to the town centre.

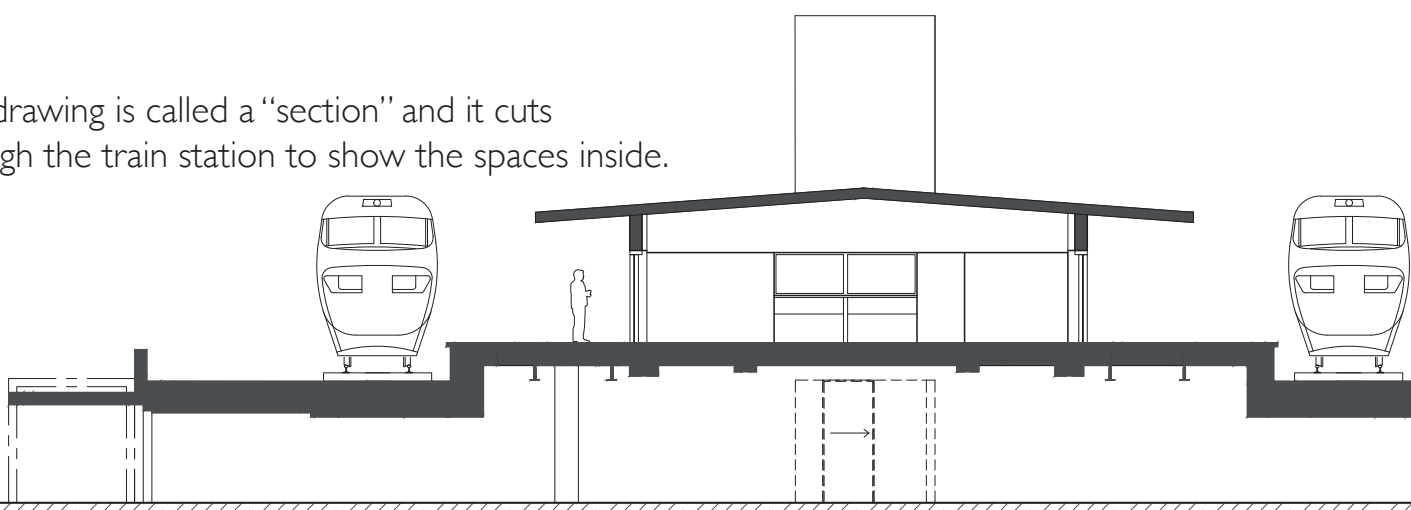
History

The railway arrived in Rochdale in 1839. The first railway station in Rochdale was located to the east of Oldham Road, where today only the name 'Railway Street' is a reminder of the site's original function. By 1856, the station was not large enough for the booming industry and plans were made for a new one further west, where the viaduct could be widened to accommodate more platforms. In 1889, a new railway station for passengers opened where it is also located today. The new station was built with two long island platforms with two bays. There was a low frontage building with a small clock tower and several buildings on the platforms. By 1964 the clock tower had been removed and in the 1970s the Victorian buildings and platform canopies were demolished. In 1979, a new yellow brick entrance building was constructed and the 8 platforms were reduced to 3. The only remnants of the Victorian station are ironwork on the abandoned island platform and the tiled tunnel.



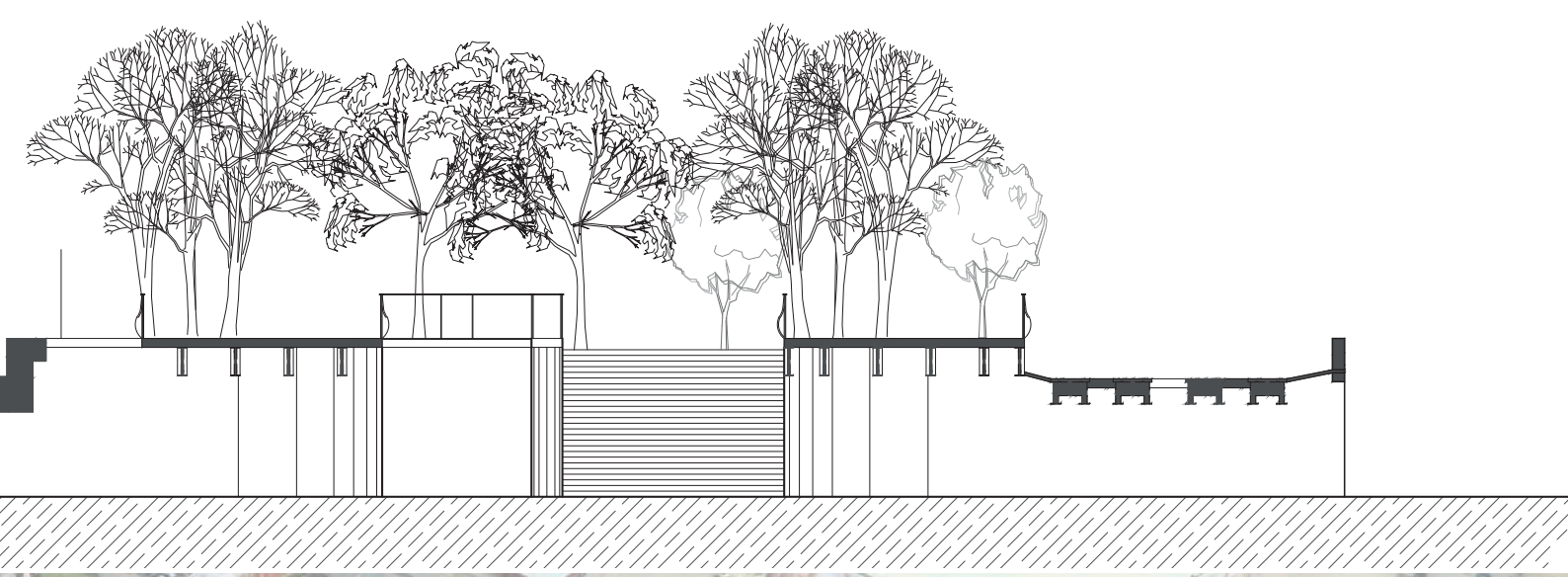
The Railway Station in 1913 (top) and 1970 (bottom).

This drawing is called a “section” and it cuts through the train station to show the spaces inside.



This 3D plan shows the station and all the buildings close by, we call this the “context”





Some of the architecture students added things to the train station, like a big new roof in the image opposite. Do you think this is a good idea? What would you like to add to the building?

Some of the architecture students added other uses to the train station, like an art gallery or a falconry tower. Do you think this is a good idea? What other uses would you like to see there?



Project for the railway station by Tara and Laura.



Project for the railway station with a new park by Constantina and Carmen.

Some of the architecture students made a new public square in front of the train station with places to sit down and relax. What kind of outside space would you like to see in this area of town?

Some of the architecture students made changes inside the building to make it lighter and more welcoming. What materials would you use to make the building look better inside?



Project for the railway station and new square by David and Riccardo.



Project for the railway station with an art gallery by Hugh.



Your Names : _____ Your School : _____

**MANCHESTER SCHOOL
OF ARCHITECTURE**



Manchester
Metropolitan
University

MANCHESTER
1824
The University of Manchester



ROCHDALE
BOROUGH COUNCIL



Historic England

Rochdale
Development
Agency

