

Local History

Historic England and Teacher's Pet have come together to bring you a collection of free resources that you can use in your local history teaching.



Historic England



Teacher's Pet

Who are Teacher's Pet?

Teacher's Pet have been providing downloadable and playable educational content to early years and primary school teachers for over 14 years. We cover all areas of the curriculum and use a team of in-house teachers and designers to create engaging and memorable concepts, that the children will love.

Why local history?

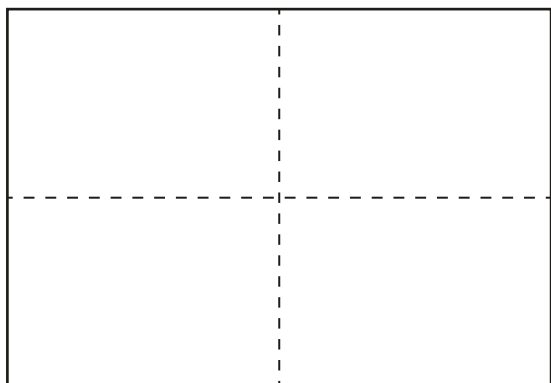
At [Teacher's Pet](#) we want to empower primary school teachers by giving them the tools they need to deliver inspiring and thoughtful lessons about the local area and its history. We believe local history teaching has such an important part to play in a child's wellbeing – helping to give children a sense of pride in where they live.

Our Local History project is designed to provide teachers across the UK with everything they need to successfully carry out a full scheme of teaching about their local area, through key enquiry questions and source led activities.

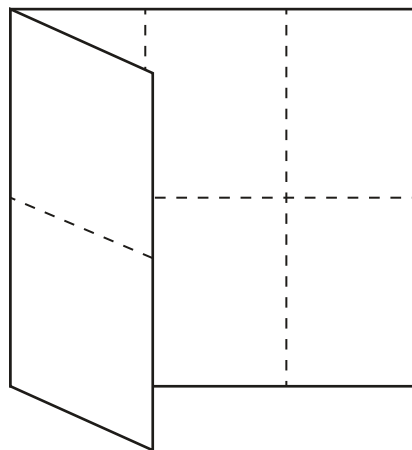
Working with [Historic England](#) gives us access to archived maps and photos for resources and information from knowledgeable local historians, as well helping us to provide the content to you free of charge.

For more information about our Local History project or to find out more about Teacher's Pet Classroom Resources, please visit our website.

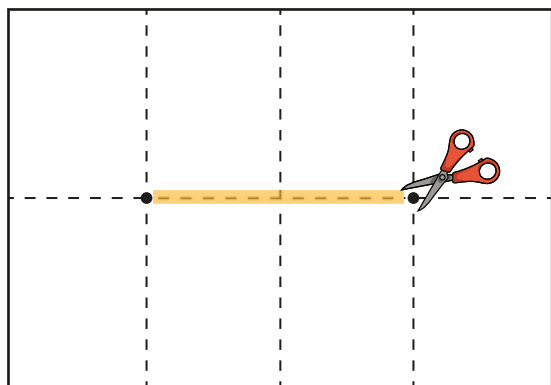
My Luton Glossary - How to fold your booklet



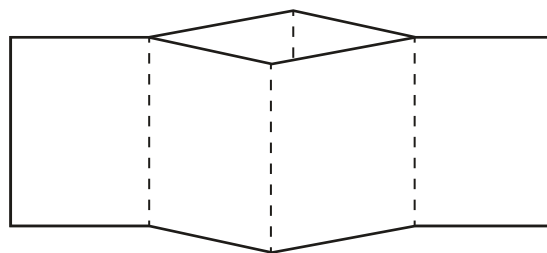
Fold your sheet in half both ways. There are lines on the booklet to help guide you.



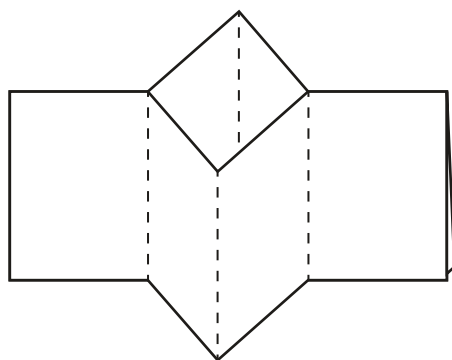
Lay your paper flat again and fold both of the short edges into the centre.



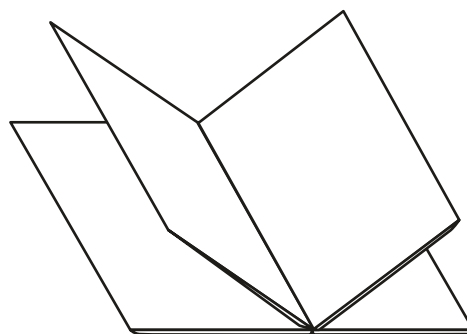
Using scissors, carefully cut along the centre fold.



Fold the paper in half long ways, then pull the cut open.



Push the sides together, closing the gap you have cut.



Fold the pages round so the cover is at the front. If you want your book to be extra strong, glue the insides of the pages so it holds it's shape.





My BEDFORDSHIRE Luton Glossary



Teacher's Pet



Historic England

Durocbrivae

A Roman settlement that grew up at the crossroads of Watling Street and Icknield Street. It grew into Dunstable.

evacuation

The removal of people from a place of danger.

Iron Age

A time period that came after the Bronze Age. Tools and weapons were now made from iron rather than just bronze and stone.

M1

The first long-distance motorway, the first leg of which was built near Luton.

Neolithic

The final stage of the Stone Age.

River Lea

The river which Luton was founded on.

Roman Empire

The countries and people that had been taken over by the Romans.

Stone Age

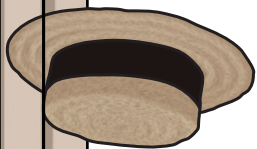
A time period that came before the Bronze Age. Tools and weapons were made from stone and wood.

straw-plaiting

A method of making textiles by braiding straw.

The Catuvellauni

A tribe of Britons that lived in the Bedfordshire and Hertfordshire areas and relied on farming.



Vikings

Inlanders from Scandinavia who came to Britain.

Wardown House

A mansion in Luton that was used as a military hospital during World War I and then became a museum.

Waulud's Bank

A neolithic henge in Leagrave, Luton that dates back to 3,000 BC.