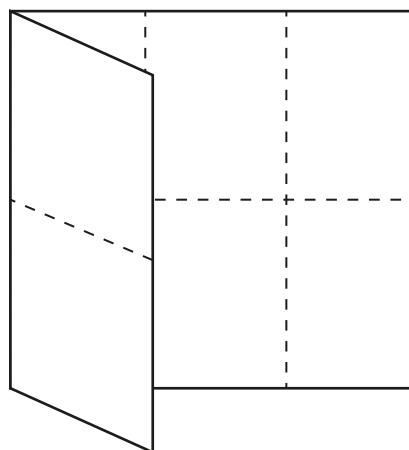
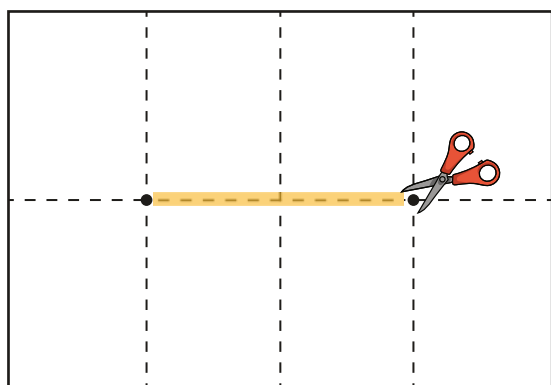


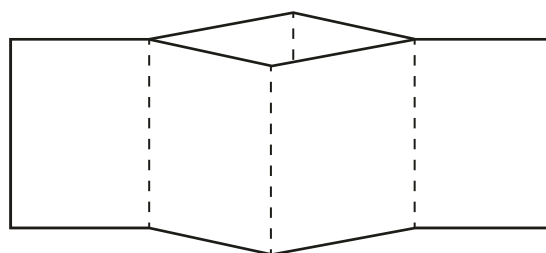
Fold your sheet in half both ways. There are lines on the booklet to help guide you.



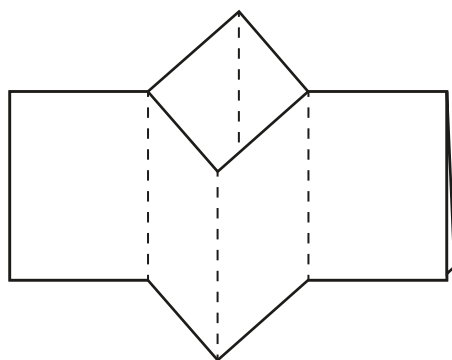
Lay your paper flat again and fold both of the short edges into the centre.



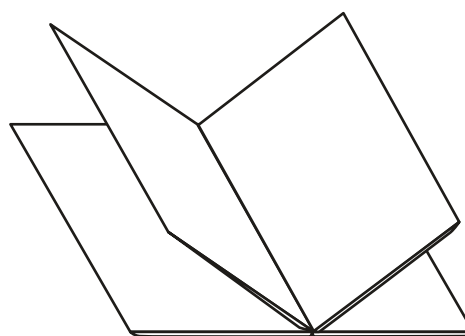
Using scissors, carefully cut along the centre fold.



Fold the paper in half long ways, then pull the cut open.



Push the sides together, closing the gap you have cut.



Fold the pages round so the cover is at the front. If you want your book to be extra strong, glue the insides of the pages so it holds its shape.



# My LONDON EAST Barking and Dagenham Glossary



Teacher's Pet



Historic England

## Victoria Cross

An award given to soldiers for incredible efforts or brave acts in the war.

## Western Front

An area in between France and Belgium where dangerous fighting took place in World War I.

## World War I

A large war that took place all over the world between two sides, the Allies and the Central Powers. It began in 1914 and ended in 1918.

## regiment

The name for a group of soldiers who fight together as a team. Each regiment is commanded by an army colonel and their commander.

## Remembrance Day

Every year on November 11th, we take time to honour and remember those who died in war.

## Sterling Works

During the war, the Sterling Works factory created telephone communications and radios for soldiers.

## tenant

Tenant is the name given to someone who pays money to live or work in a building, but doesn't own the building.

## King George V

King George ruled over the United Kingdom from 1910 to 1936.

## London slums

The name given to the poor housing in East London. They were dirty and crowded areas.

## peace party

Peace parties were held across the UK to celebrate the end of WWI.

## propaganda

Art created by a group to influence others into believing in their cause or acting on their behalf.

## Gandhi!

Gandhi was a peaceful leader who fought for the rights and freedom of the Indian people using non-violent methods like protests.

## Homes for Heroes

Homes for Heroes was the name for the campaign to build more homes for returning war heroes after WWI.

## Job Drain

Job Drain was a local Dagenham World War I hero. He was awarded the Victoria Cross for his bravery.

## Central Powers

During WWI, the Central Powers included Germany, Austria-Hungary and the Ottoman Empire.

## community

During WWI, the Central Powers included Germany, Austria-Hungary and the Ottoman Empire.

## Franz Ferdinand

Franz was a famous prince from Austria-Hungary. His assassination started World War I.

## Allies

During WWI, the Allies consisted of Britain, France, Russia and the USA.

## artillery battery gun

A large and powerful weapon that shot out explosive shells over long distances. It was like a big cannon that could be moved around on wheels or on tracks.

## Becontree estate

A large housing estate that was built after World War I to accommodate the returning war heroes and those living in London slums.

# Local History

Historic England and Teacher's Pet have come together to bring you a collection of free resources that you can use in your local history teaching.

---



Historic England



Teacher's Pet

---

## Who are Teacher's Pet?

Teacher's Pet have been providing downloadable and playable educational content to early years and primary school teachers for over 14 years. We cover all areas of the curriculum and use a team of in-house teachers and designers to create engaging and memorable concepts, that the children will love.

## Why local history?

At [Teacher's Pet](#) we want to empower primary school teachers by giving them the tools they need to deliver inspiring and thoughtful lessons about the local area and its history. We believe local history teaching has such an important part to play in a child's wellbeing – helping to give children a sense of pride in where they live.

Our Local History project is designed to provide teachers across the UK with everything they need to successfully carry out a full scheme of teaching about their local area, through key enquiry questions and source led activities.

Working with [Historic England](#) gives us access to archived maps and photos for resources and information from knowledgeable local historians, as well helping us to provide the content to you free of charge.

For more information about our Local History project or to find out more about Teacher's Pet Classroom Resources, please visit our website.