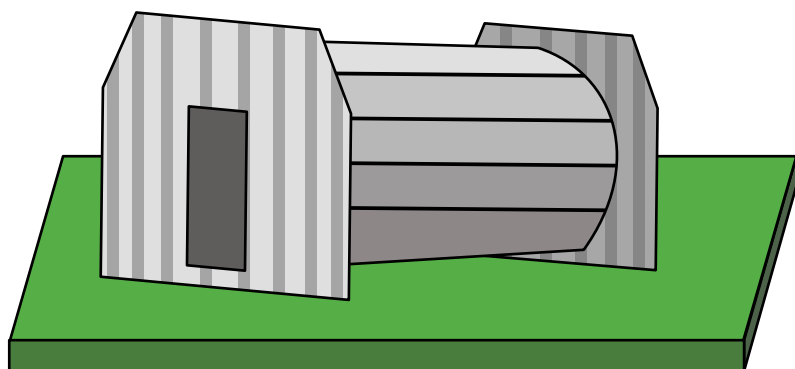




What was life like for people who stayed in Barking and Dagenham in WW2?

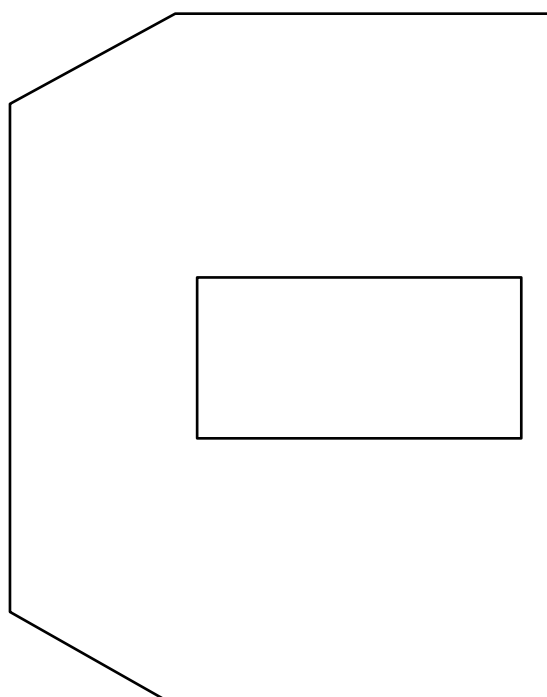
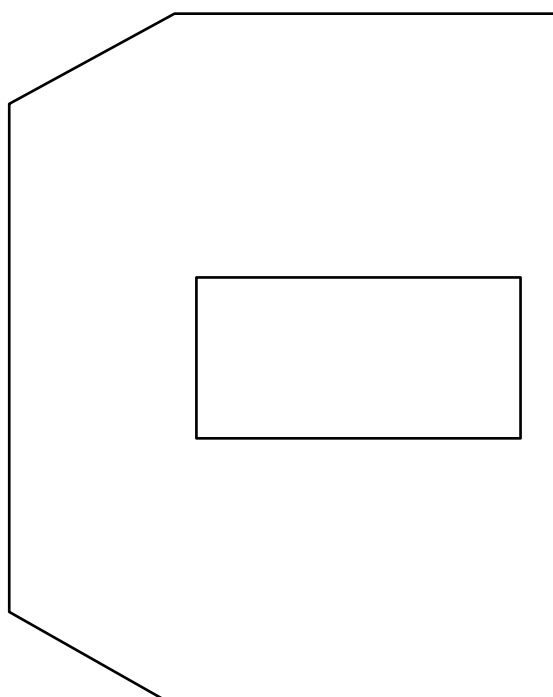
## Build your own Anderson Air Raid Shelter

1. First, print your pieces onto card.
2. Second, fold the middle section of your Anderson shelter along the lines.
3. Next, bend the middle section to create a curved shape. Stick the rectangular bottom pieces together and stick and fold the tabs inwards.
4. After that, take your front and back pieces and glue them to each side.
5. Finally, decorate your Anderson shelter. You could paint it or add tinfoil to give it a metallic finish. Blend it in to its surroundings by adding grass or moss.

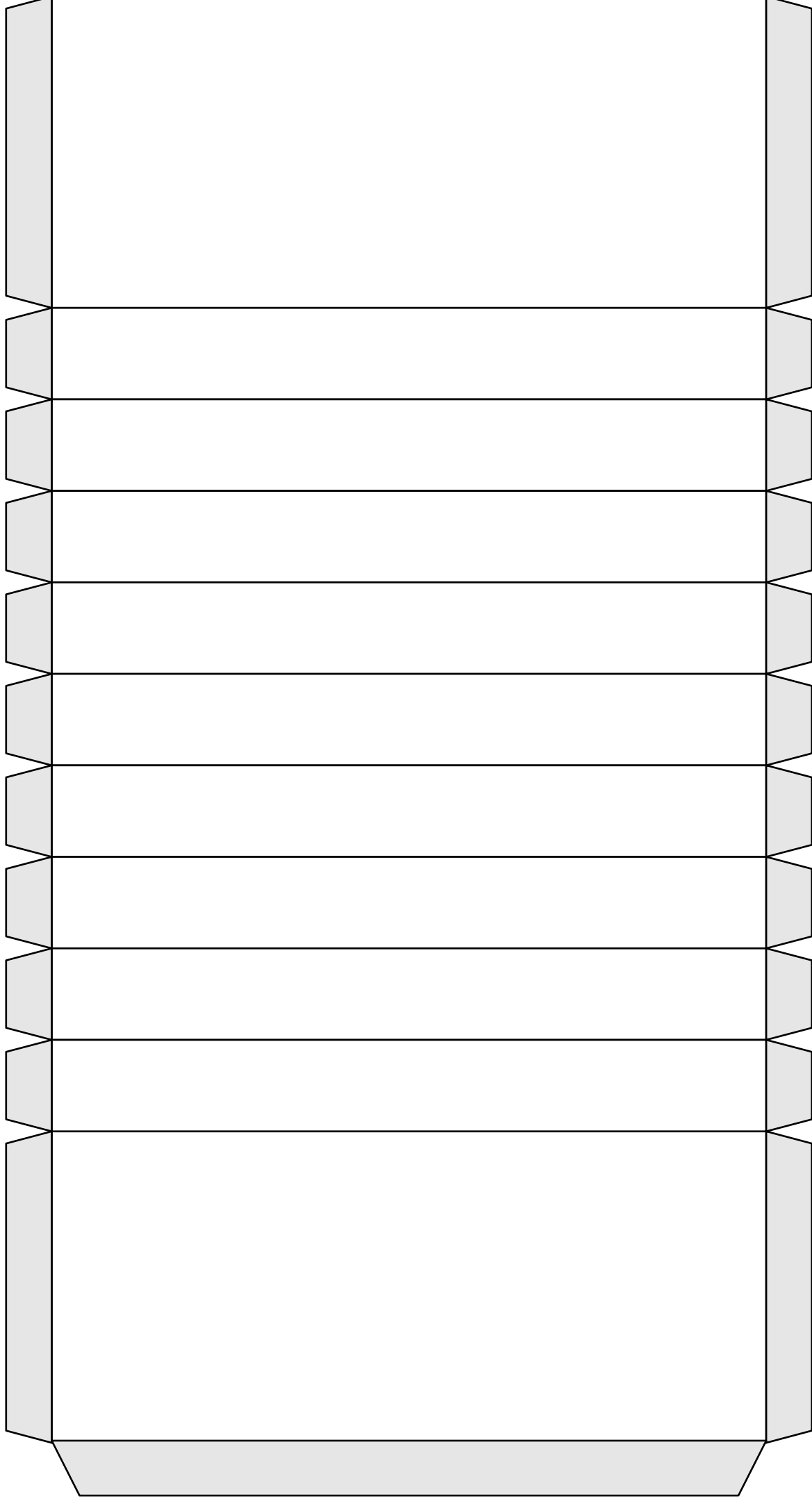


[www.tpet.co.uk](http://www.tpet.co.uk)

### Front and back of Anderson Shelter craft



Body of Anderson Shelter craft

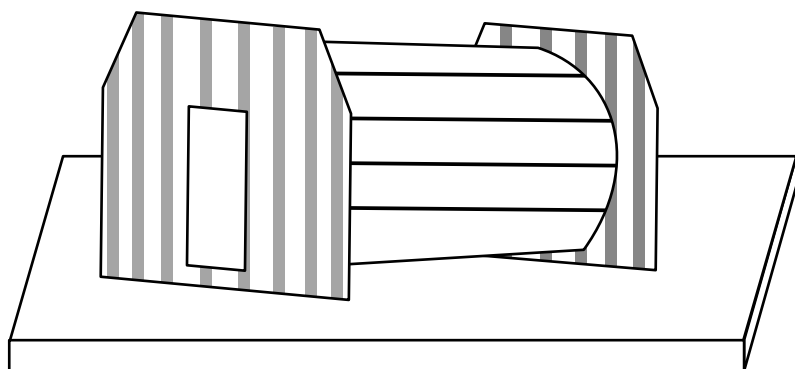




What was life like for people who stayed in Barking and Dagenham in WW2?

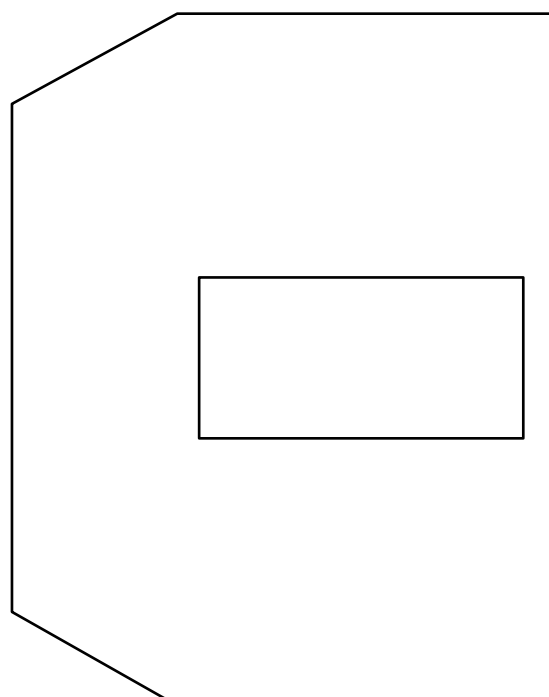
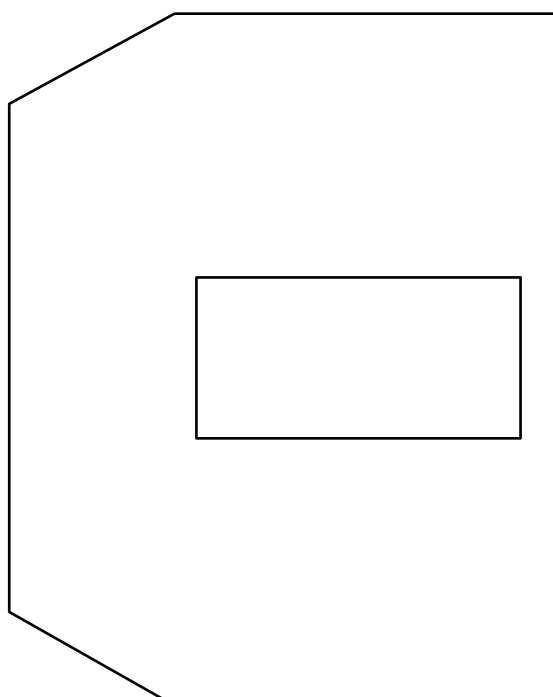
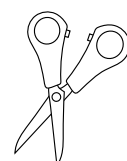
## Build your own Anderson Air Raid Shelter

1. First, print your pieces onto card.
2. Second, fold the middle section of your Anderson shelter along the lines.
3. Next, bend the middle section to create a curved shape. Stick the rectangular bottom pieces together and stick and fold the tabs inwards.
4. After that, take your front and back pieces and glue them to each side.
5. Finally, decorate your Anderson shelter. You could paint it or add tinfoil to give it a metallic finish. Blend it in to its surroundings by adding grass or moss.

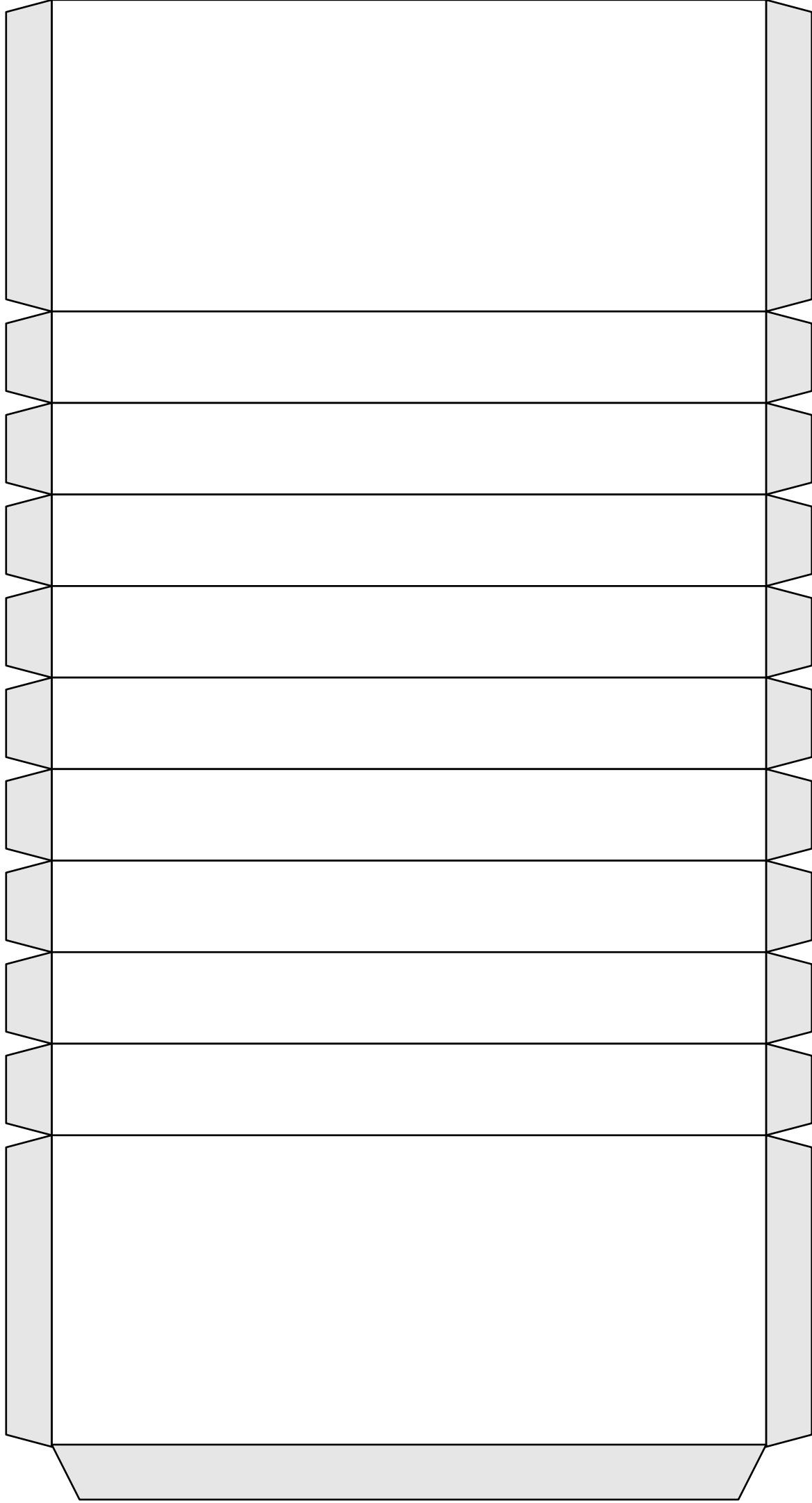
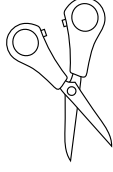


[www.tpet.co.uk](http://www.tpet.co.uk)

### Front and back of Anderson Shelter craft



Body of Anderson Shelter craft



# Local History

Historic England and Teacher's Pet have come together to bring you a collection of free resources that you can use in your local history teaching.

---



Historic England



Teacher's Pet

---

## Who are Teacher's Pet?

Teacher's Pet have been providing downloadable and playable educational content to early years and primary school teachers for over 14 years. We cover all areas of the curriculum and use a team of in-house teachers and designers to create engaging and memorable concepts, that the children will love.

## Why local history?

At [Teacher's Pet](https://www.tpet.co.uk) we want to empower primary school teachers by giving them the tools they need to deliver inspiring and thoughtful lessons about the local area and its history. We believe local history teaching has such an important part to play in a child's wellbeing – helping to give children a sense of pride in where they live.

Our Local History project is designed to provide teachers across the UK with everything they need to successfully carry out a full scheme of teaching about their local area, through key enquiry questions and source led activities.

Working with [Historic England](https://www.historicengland.org.uk) gives us access to archived maps and photos for resources and information from knowledgeable local historians, as well helping us to provide the content to you free of charge.

For more information about our Local History project or to find out more about Teacher's Pet Classroom Resources, please visit our website.